

Manhattan Beach House

Manhattan Beach, California

In a Southern California beachside neighborhood, where 3-story houses are densely packed, Manhattan Beach House is intended to provide a spacious, peaceful feeling, offering an experience close to nature throughout the interior of the building itself. Behind the street front, the volume of this house dissolves, with glimpses through openings between floors and between distant rooms. Though the surrounding buildings fill nearly all of their parcels, these openings bring natural light deep into the house.

Though like all houses in this neighborhood the street front is narrow, the facade wraps into the sideyard, to provide a sense of depth to the appearance from the street, as well as to soften the experience of entry. Circulation within the house is through tall connecting spaces, particularly the entry and the courtyard. Entry is through a screened semi-outdoor garden space, leading to the 2nd floor main entrance.

The second floor screened courtyard is open to the sky and includes a small garden and fountain. A large maple tree is a reminder of natural time and the seasons. The courtyard is visible throughout the house, whether moving along the length of the house or up to the third floor main living level.

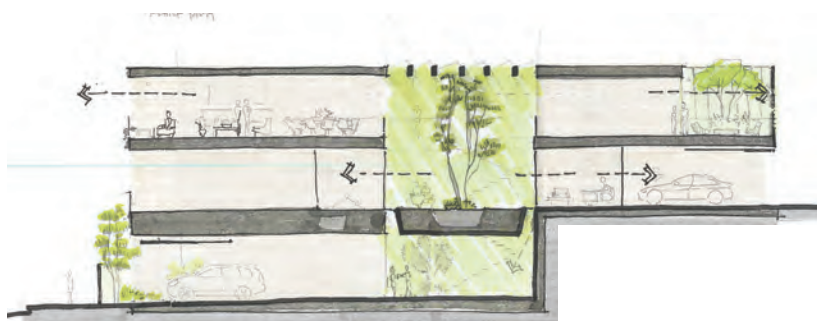
At the third floor living room, sliding glass barn doors open to a deck with a panoramic view. Along the entire length of the house, a slot of space sneaks through all the third floor spaces, and aligns with a narrow street which runs toward the beach, allowing a distant view of breaking waves. The third floor living spaces adjoin a lap pool and vertical garden open to the sky. From the farthest, highest part of the house, at the end of the pool, one can look across the water in the pool, through the house, to the ocean beyond.

PROJECT TYPE	Single-family residence
COMPLETED	August, 2021
SIZE	6,000 square feet





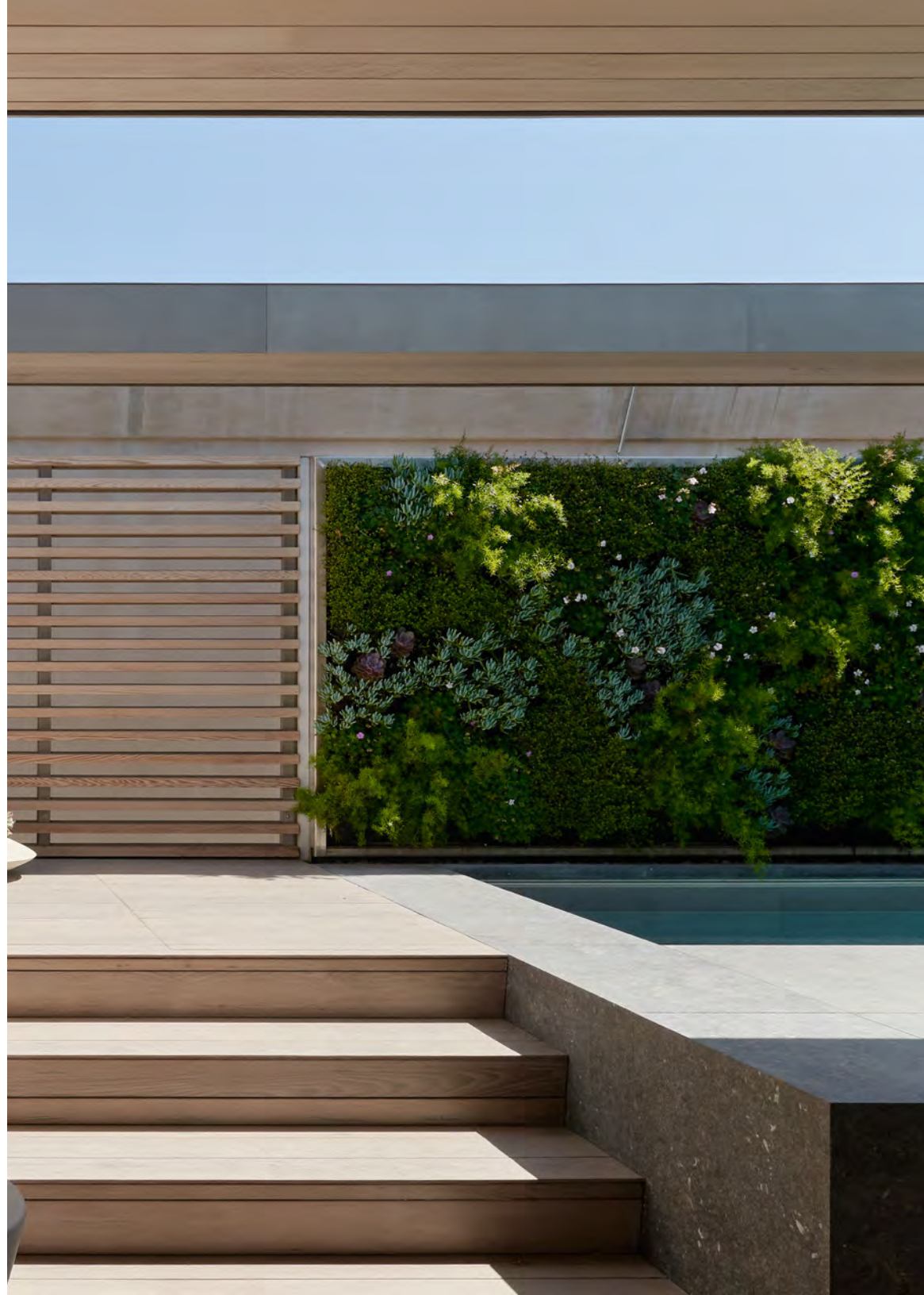
DISSOLVED EDGES LIVING SPACES CLOSE TO NATURE AND NATURAL LIGHT



DISSOLVED EDGES CENTRAL COURTYARD

Second floor screened courtyard is open to the sky and includes a small garden and fountain. A large maple tree is a reminder of natural time and the seasons landscape.

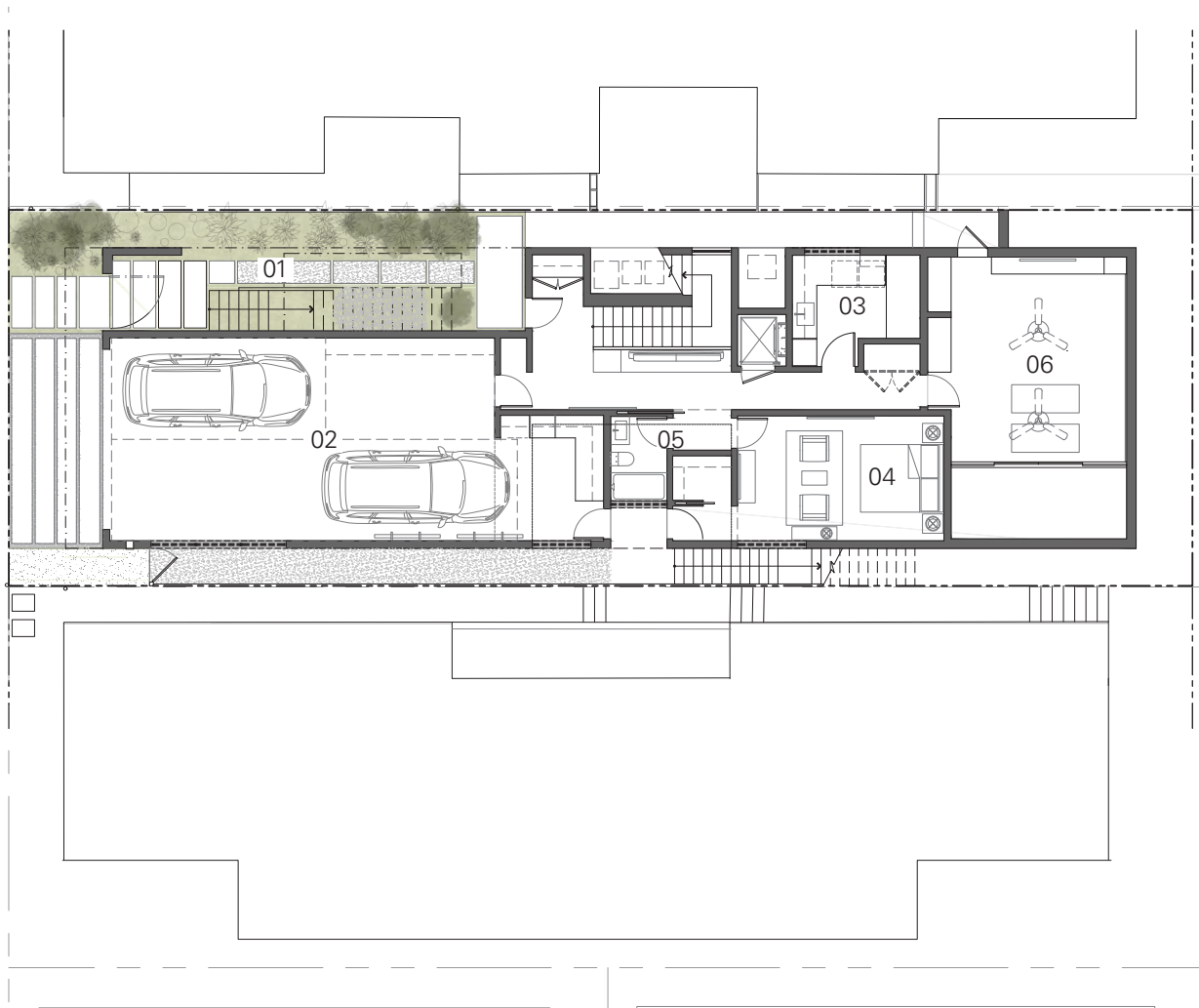
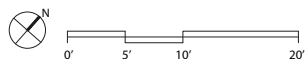




DISSOLVED EDGES CONNECTION TO LANDSCAPE

The third floor living spaces adjoin a lap pool and vertical garden open to the sky.

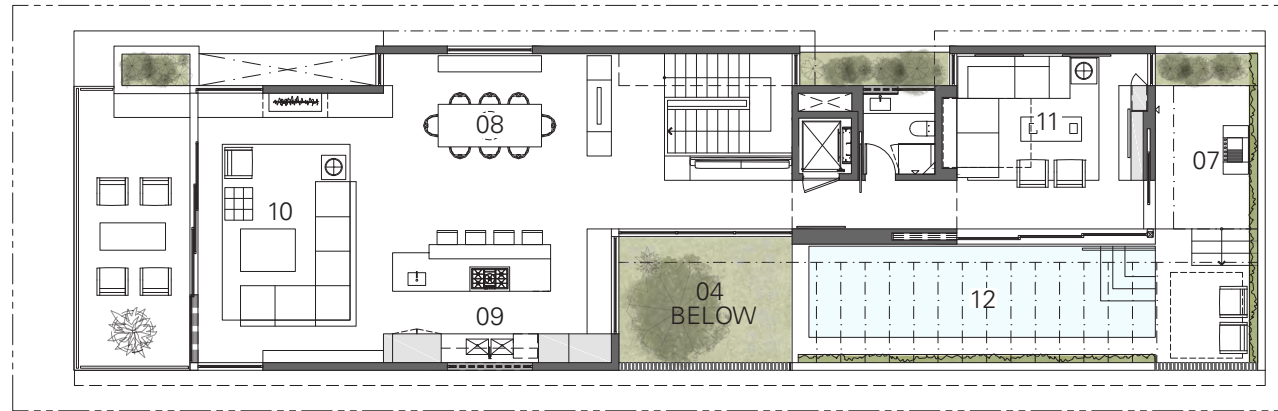
- 01 ENTRY COURT
- 02 GARAGE
- 03 LAUNDRY / MECH RM
- 04 GUEST ROOM
- 05 BATH
- 06 GYM



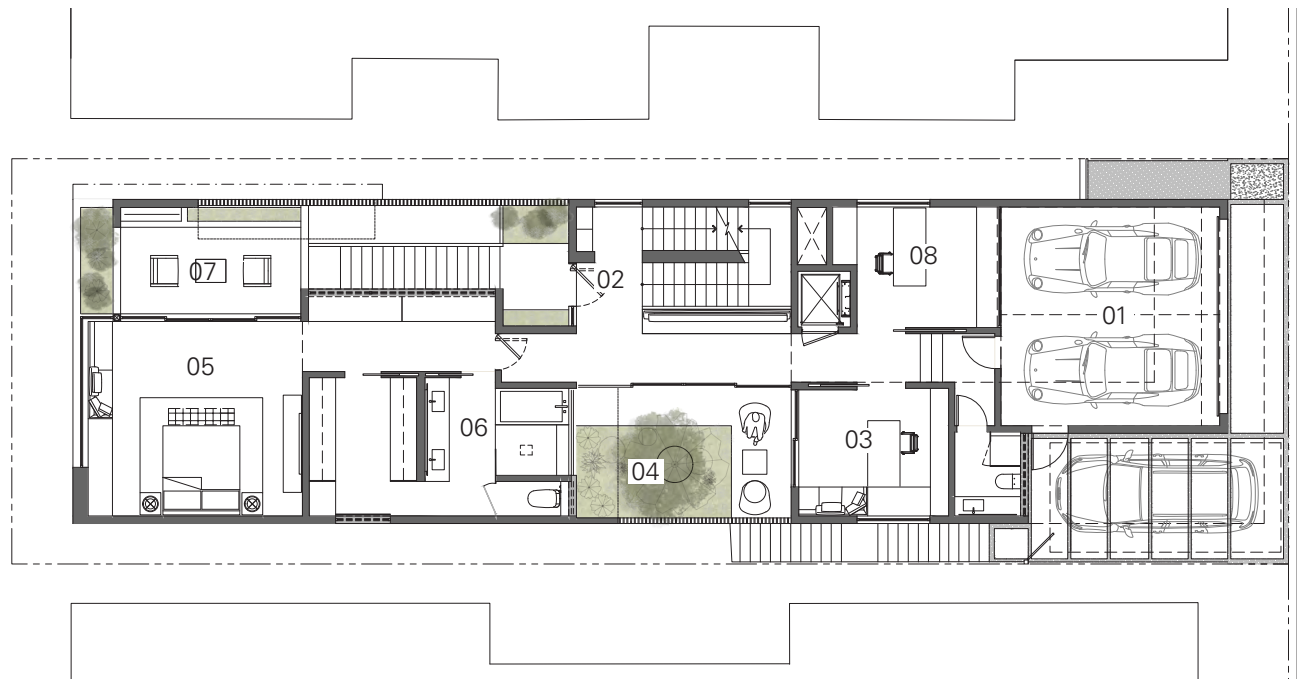
SITE PLANS

SITE / FIRST FLOOR PLAN

VICINITY PLAN

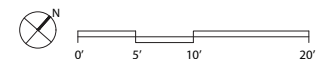


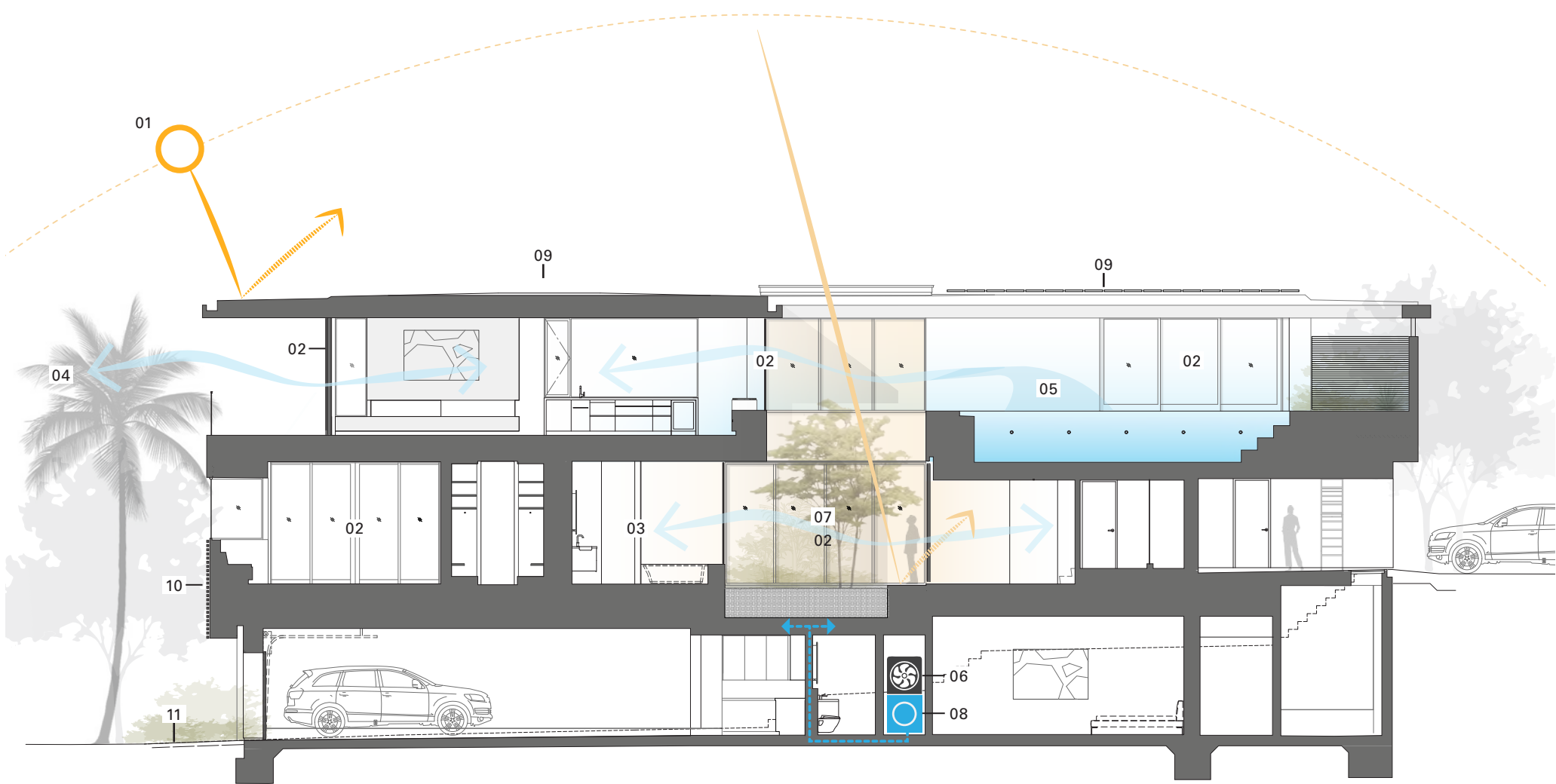
THIRD FLOOR PLAN



SECOND FLOOR PLAN

- 01 GARAGE
- 02 ENTRY FOYER
- 03 OFFICE
- 04 COURTYARD
- 05 PRIMARY BEDROOM
- 06 PRIMARY BATH
- 07 DECK
- 08 DINING ROOM
- 09 KITCHEN
- 10 LIVING ROOM
- 11 STUDY / MEDIA
- 12 POOL





HEATING / COOLING / VENTILATION

- 01 large overhangs for shading
- 02 operable glazing for passive cooling
- 03 courtyard for cross ventilation
- 04 openings oriented to capture ocean breeze
- 05 evaporative cooling from pool
- 06 high efficiency variable speed mechanical system (multi-zone)

WELLNESS

- 07 courtyard & large glazed openings for daylighting
- 08 whole house water filtration system

RESOURCES & MATERIALS

- 09 solar panels & battery system
- 10 exterior oiled cedar intended to age with time
- 11 non-invasive plantings & pervious surfaces

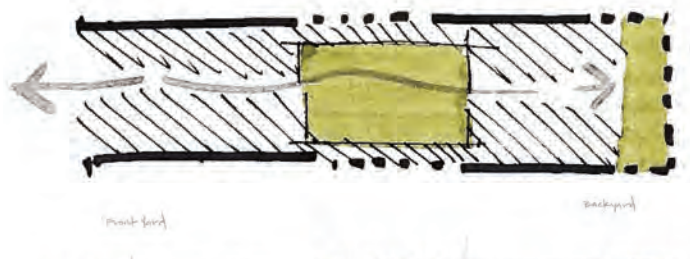


BUILDING SECTION SUSTAINABILITY INTENT



FRAMED VIEWS WATER-TO-WATER

From the farthest, highest part of the house, at the end of the pool, one can look across the water in the pool, through the house, to the ocean beyond.



FRAMED VIEWS SIGHT LINES EXTENDED

Along the entire length of the house, a slot of space sneaks through all the third floor spaces, and aligns with a narrow street which runs toward the beach, allowing a distant view of breaking waves.





DISSOLVED EDGES DISPERSED LIGHT

The volume of the house dissolves, with glimpses through openings between floors and between distant rooms filling the spaces with natural light.





MATERIAL PALETTE

Warm wood tones reflect the changing colors of the surrounding beach landscape



