

COLOR YOUR CITY

THE ARCHITECTURE COLORING BOOK



EDI Committee

AIA Long Beach/South Bay

2026

COLOR YOUR CITY

THE ARCHITECTURE COLORING BOOK

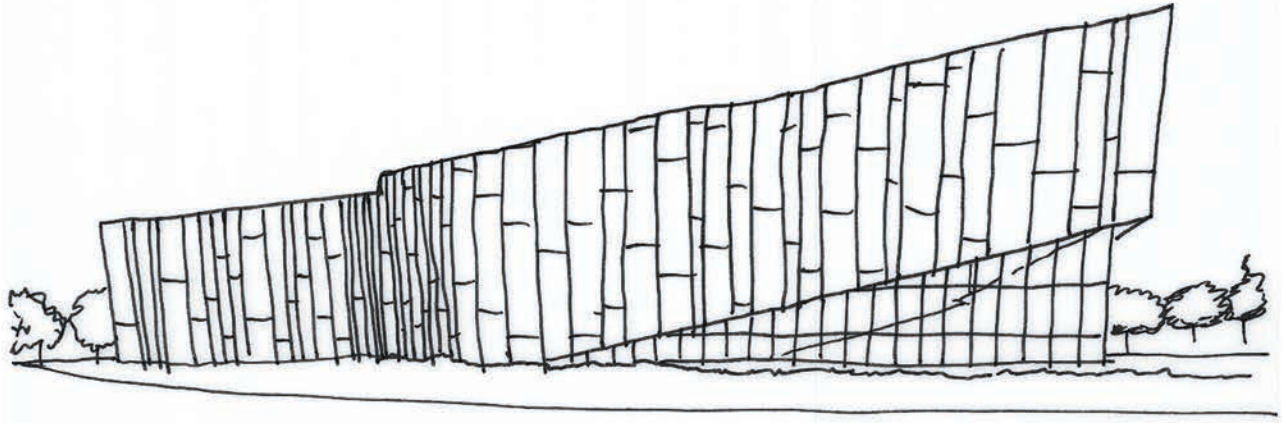
The American Institute of Architects (AIA) is a national organization that supports architects and design professionals in creating buildings and communities that improve people's lives. Through advocacy, education, and community programs, AIA helps shape a more sustainable, inclusive, and well-designed world.

We gratefully acknowledge AIA for their support through an Architecture Week 2026 grant, which made the printing of this coloring book possible—helping us share the joy of architecture with the next generation of designers.



Columbia Memorial Space Center

Downey, 2009 | Architect: Arquitectonica



This unique building was designed to inspire curiosity, with bold shapes that reflect the excitement of space exploration. *Fun fact:* The center is located near the site where NASA once built parts of real spacecraft—including the Apollo and Space Shuttle programs!

Engine Company No. 8
Long Beach, 1929 | Architects: Wright and Gentry



This historic fire station has been helping keep the community safe since 1929, with its strong walls and classic design. *Fun fact:* Engine Company No. 8 was originally built as both a fire station and a police substation—two important services in one building!

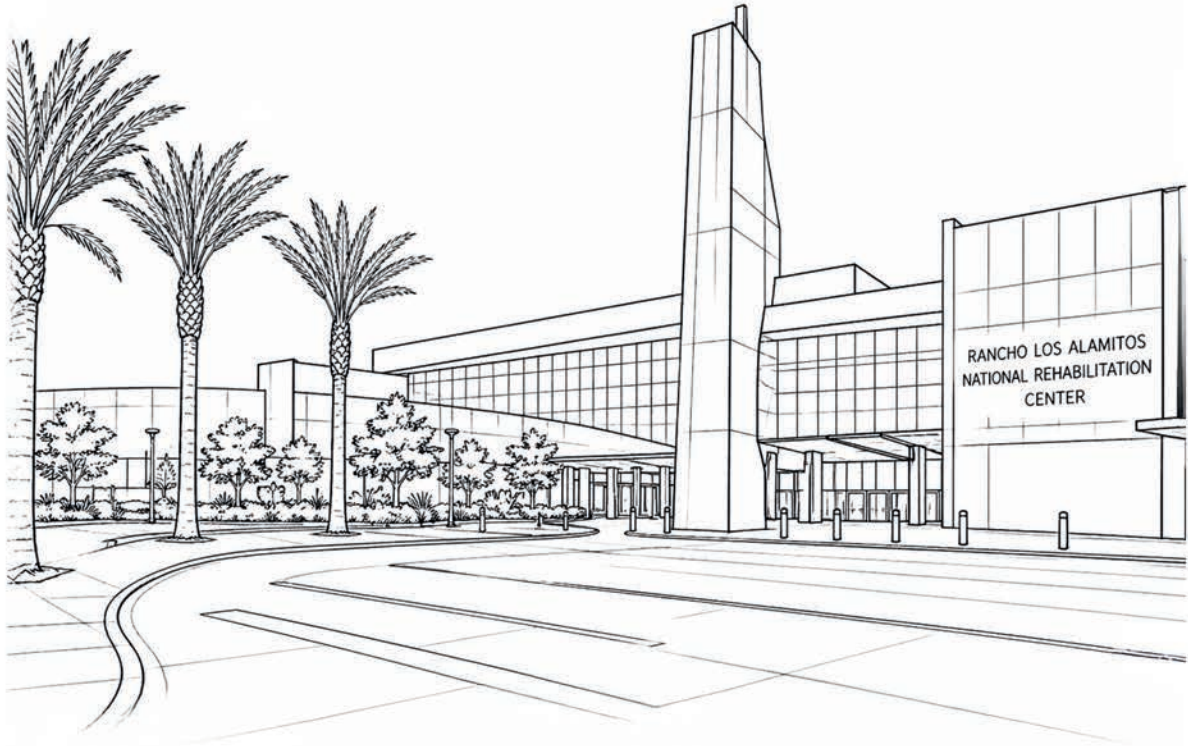
Seaview Neighborhood Home

Rancho Palos Verdes, 1960 | Architect: Paul R. Williams, FAIA
of Paul R. Williams & Associates



This home was designed to feel open and connected to the outdoors, with big windows and spaces that welcome light and fresh air. *Fun fact:* The architect, Paul R. Williams, designed homes for many families—and he was known for drawing plans upside down so clients could easily understand his ideas!

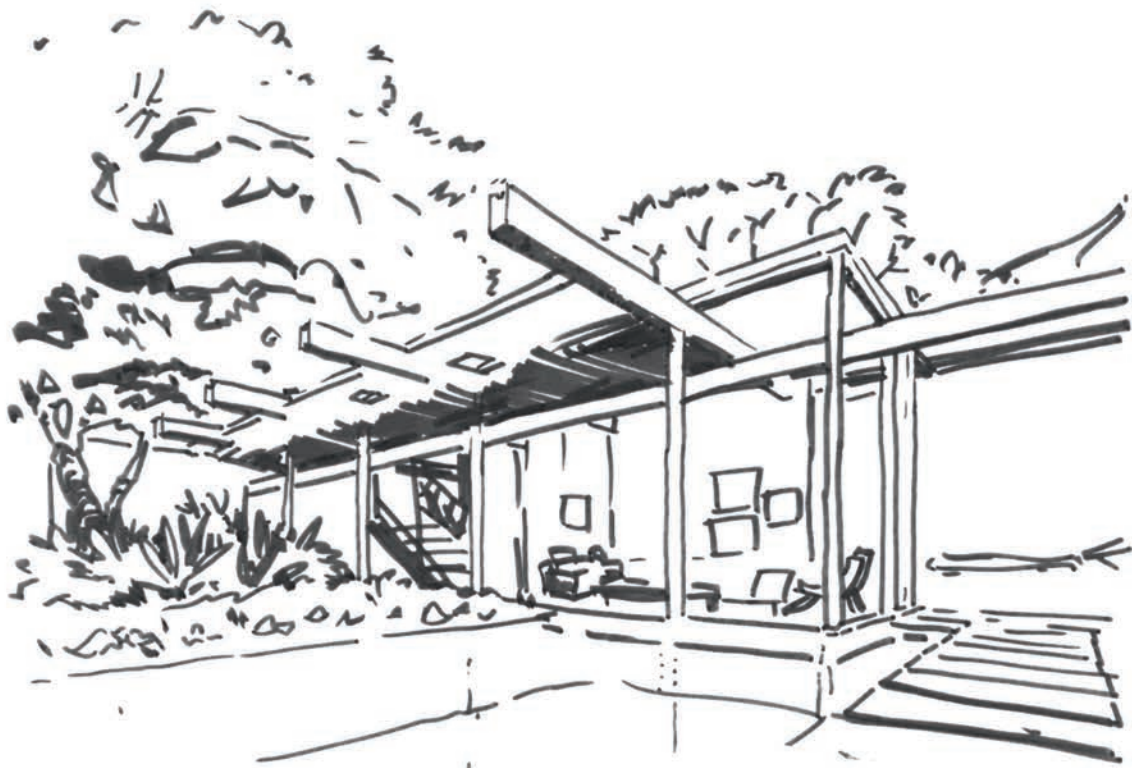
Rancho Los Alamitos National Rehabilitation Center
Downey, 2018 | Architects: David King, FAIA; Francie Moore, FAIA;
and Bonnie Khang-Keating - all of SmithGroup



This modern center is designed to feel open and welcoming, with lots of glass and space for people to heal and recover. *Fun fact:* Rehabilitation centers help people relearn everyday skills—like walking, talking, and moving—after an injury or illness!

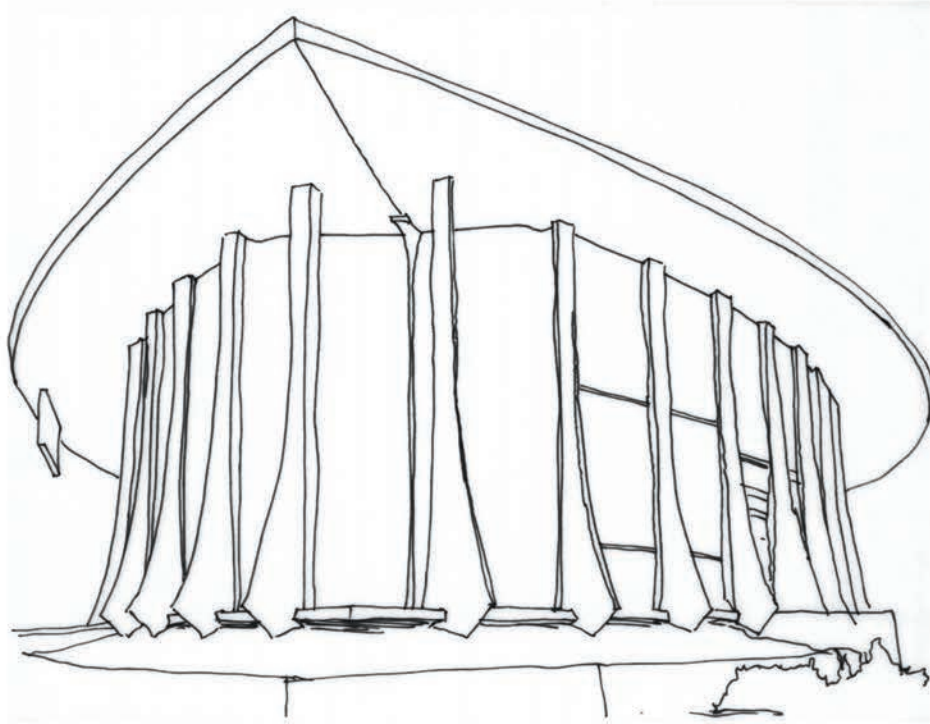
Killingsworth Office Building

Long Beach, 1955 | Architect: Edward A. Killingsworth, FAIA of Killingsworth, Brady & Smith



This mid-century office building features clean lines and simple shapes that make it feel both modern and timeless. *Fun fact:* Architect Edward A. Killingsworth was known for designing buildings that blend indoor and outdoor spaces—perfect for Southern California living!

Culver Federal Savings & Loan (now Chase Bank)
Manhattan Beach, 1965 | Architect: Chancy Miles Lott, AIA



This bank building uses bold shapes and strong lines to create a design that feels both modern and welcoming. *Fun fact:* In the 1960s, many banks were designed to feel open and friendly, so people would feel comfortable coming inside!

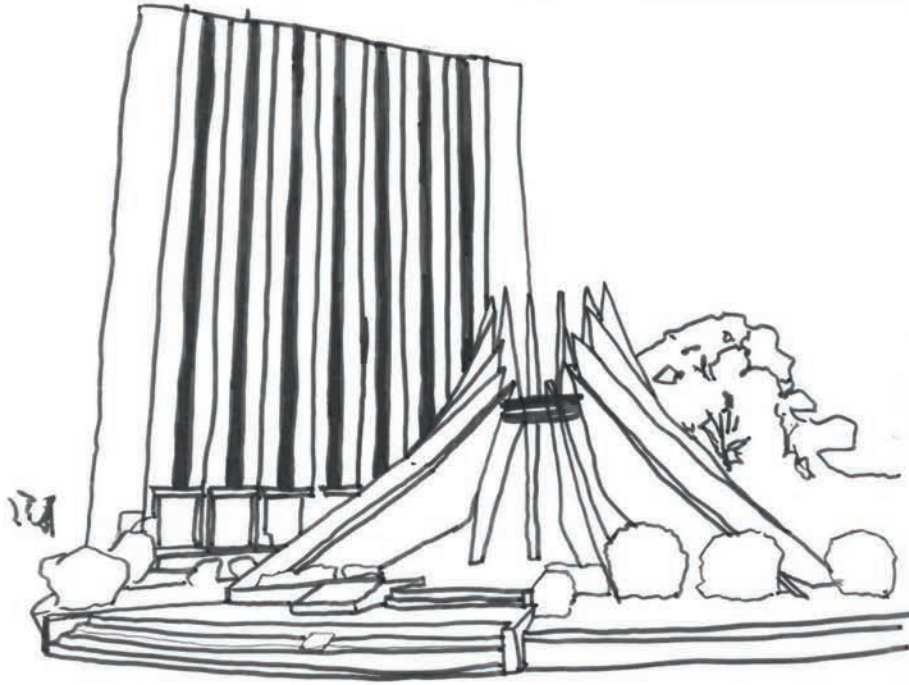
Long Beach Civic Center

Long Beach, 2019 | Architects: SOM (Lead); Kelly Sutherlin
McLeod, FAIA of Kelly Sutherlin McLeod Architecture (Executive)



This civic center brings important city services together in a bright, modern space designed for the community. *Fun fact:* The new Long Beach Civic Center includes City Hall, a library, and a park—all in one place where people can gather, learn, and explore!

Compton City Hall & Civic Center
Compton, 1977 | Architect: Harold L. Williams, FAIA, NOMAC
of Harold Williams Associates



This civic center was designed as a place where the community can gather and connect, with strong shapes that give it a sense of importance. *Fun fact:* City halls are often designed to stand out because they're where important decisions are made for the whole community!

Young Women's Christian Association (YWCA)
San Pedro, 1918 | Architect: Julia Morgan, FAIA



This historic building was designed with simple, elegant details to create a welcoming place for community and connection. *Fun fact:* The architect, Julia Morgan, was one of the first licensed women architects in California and designed more than 700 buildings!

Dominguez Rancho Adobe

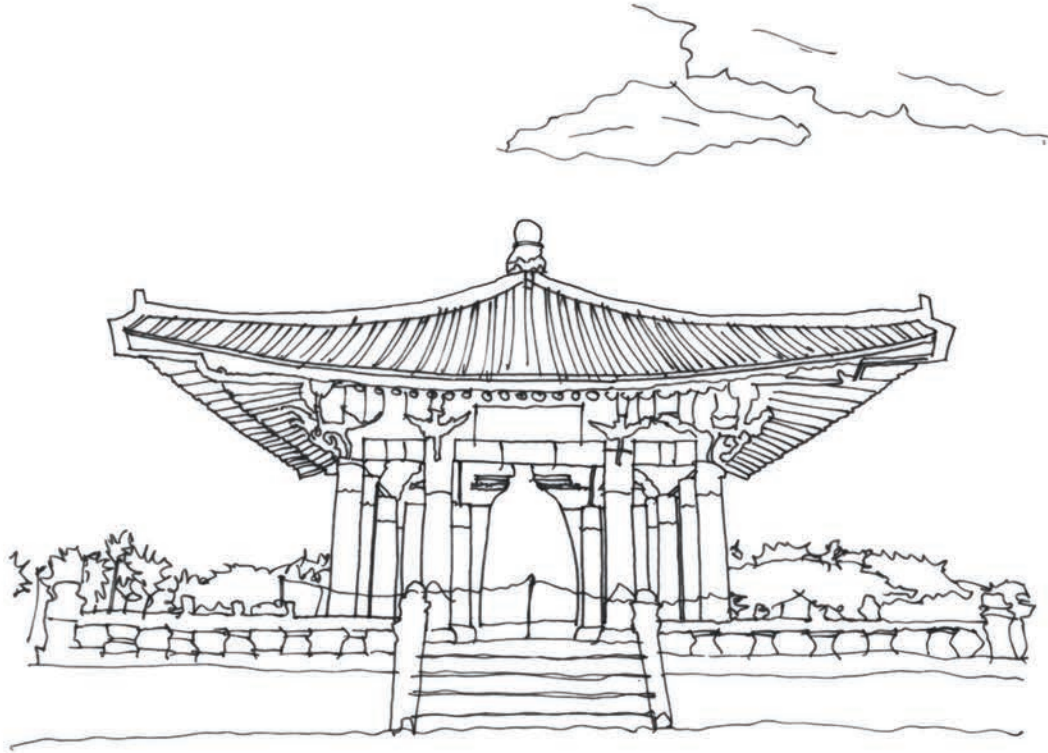
Rancho Dominguez, 1826 | Built by Manuel Dominguez



This adobe home was built with thick earthen walls to keep it cool in the summer and warm in the winter. *Fun fact:* Adobe is made from natural materials like clay, sand, and straw—kind of like building with mud that hardens in the sun!

Korean Friendship Bell Pavillion

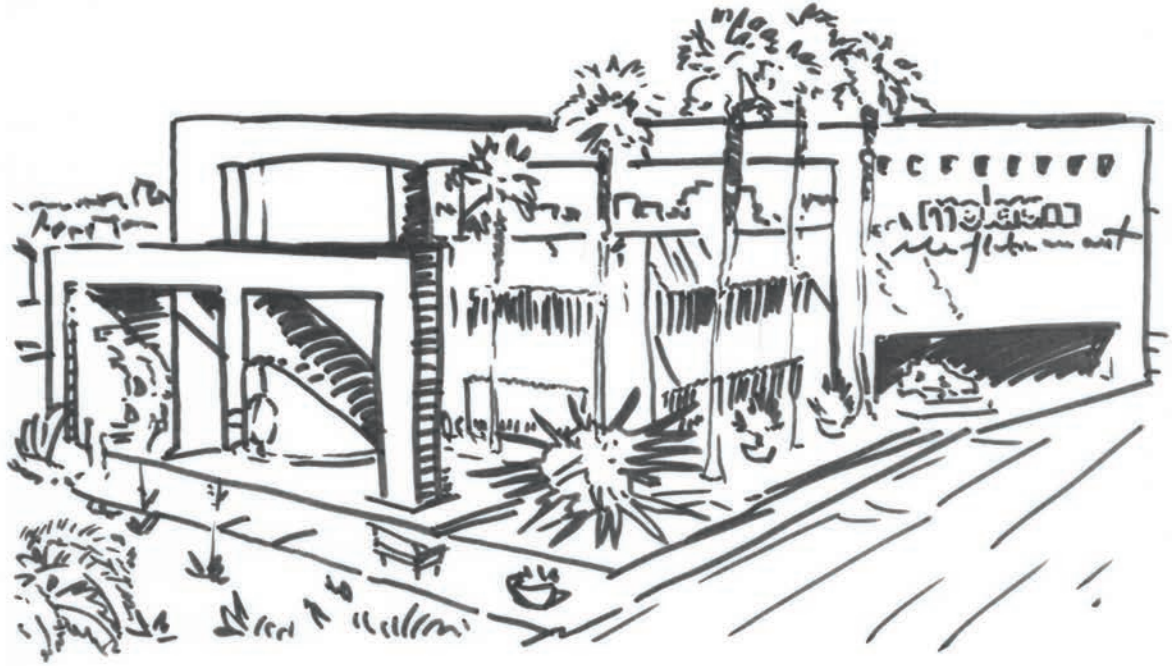
San Pedro, 1976 | Built by South Korean Craftsmen



This open-air pavilion features a traditional design with a curved roof and detailed patterns that celebrate Korean culture. *Fun fact:* The giant bell inside was a gift from South Korea to the United States as a symbol of friendship and peace!

Museum of Latin American Art (MOLAA)

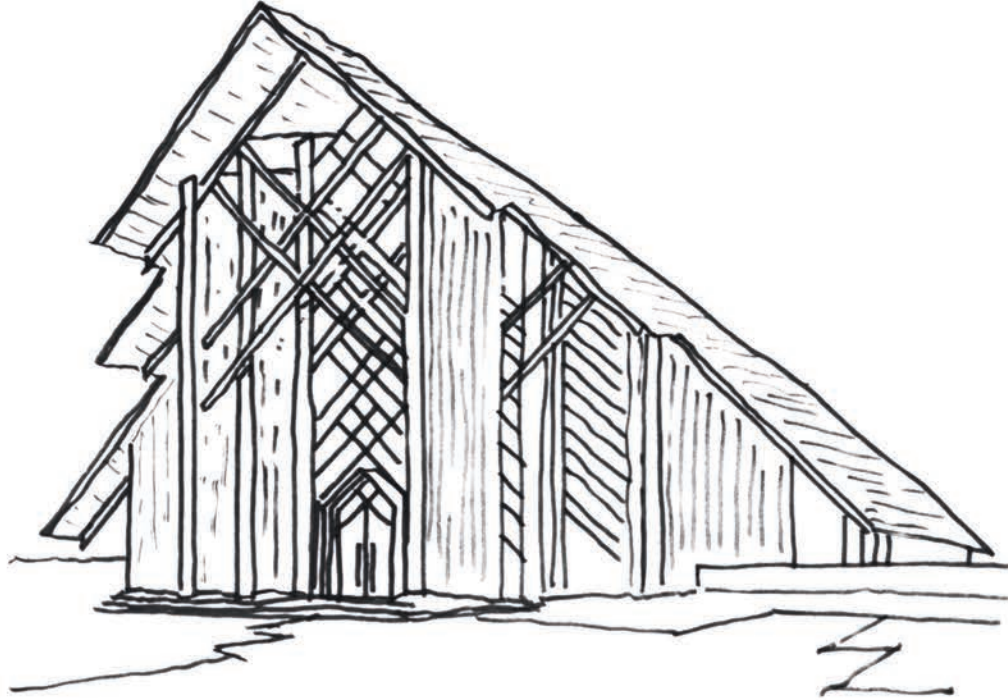
Long Beach, 2007 | Architect: Manuel Rosen, FAIA



This museum was designed with bright, open spaces that invite people to explore and experience art from many different Latin American cultures. *Fun fact:* MOLAA is one of the only museums in the United States dedicated entirely to modern and contemporary Latin American art from across Latin America!

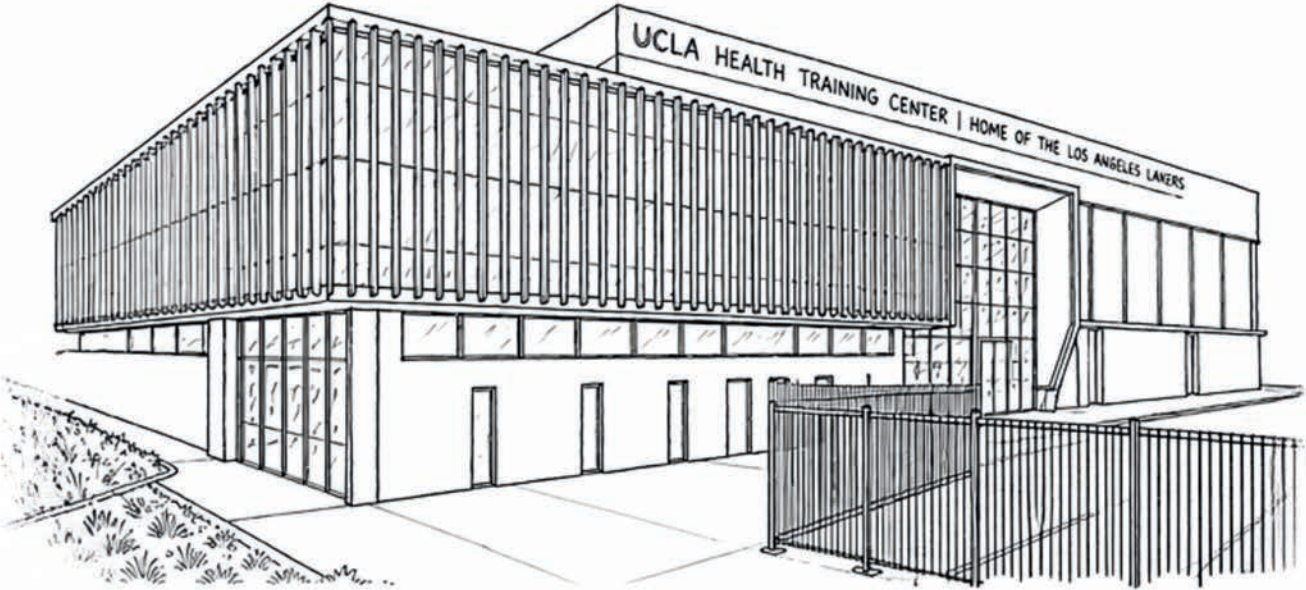
SkyRose Chapel at Rose Hills

Whittier, 1997 | Architects: E. Fay Jones, FAIA and Maurice Jennings, AIA – both of Jones and Jennings



This chapel is designed with sweeping curves and soft light to create a peaceful place for reflection. *Fun fact:* The chapel sits high on a hill, offering beautiful views of the surrounding landscape!

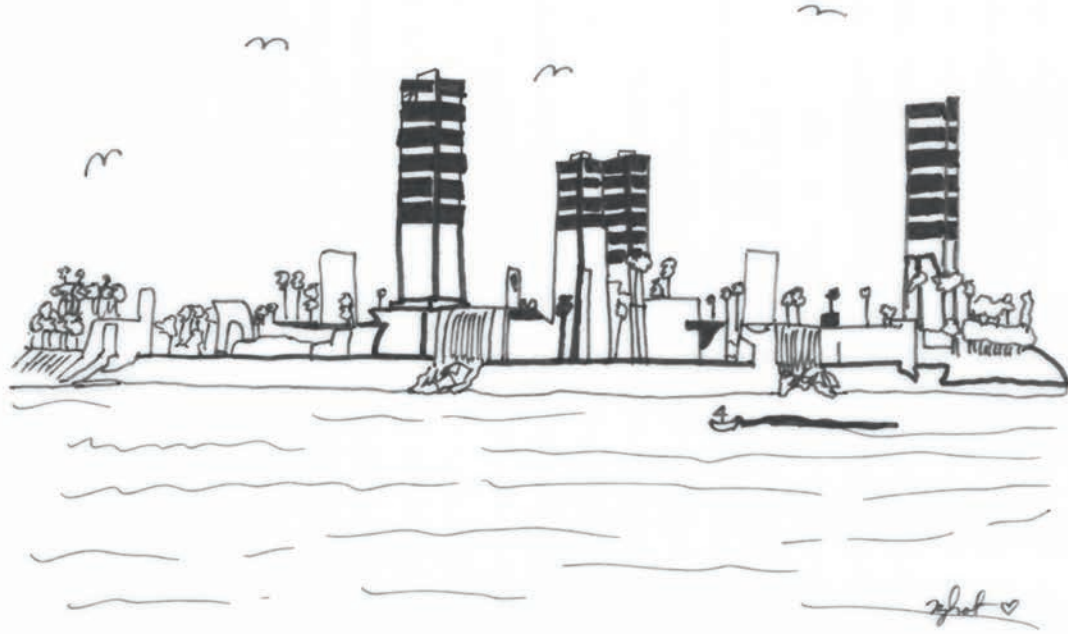
UCLA Health Training Center | Home of the Lakers
El Segundo, 2017 | Architects: James Renne of ROSETTI (Lead) and Alice Hricak of Perkins+Will (Interiors/Programming)



This training center was designed with large, open spaces where athletes can practice, train, and stay in top shape. *Fun fact:* This is where the Los Angeles Lakers practice—so it's a place where championship teams get ready for the game!

Island White of the THUMS Islands

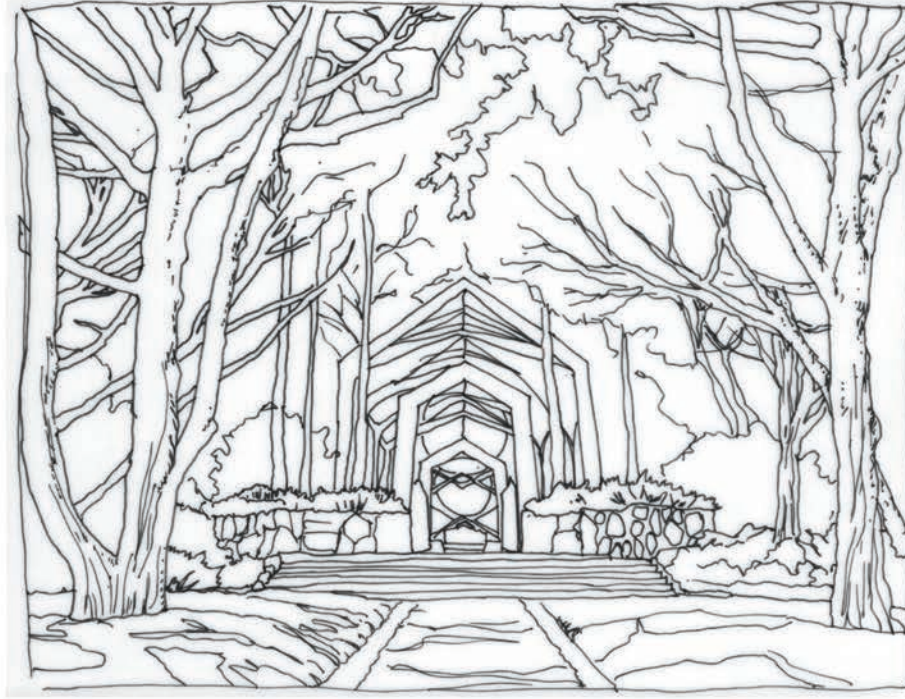
Long Beach, 1965 | Landscape Architect: Joseph Linesch of Linesch & Reynolds



This island was designed to look like part of the city, even though it sits out in the ocean! *Fun fact:* The THUMS Islands hide oil equipment inside—and each one was styled with buildings, trees, and lights to blend in with the coastline!

Wayfarers Chapel

Rancho Palos Verdes, 1951 | Architect: Lloyd Wright



This glass chapel is designed to blend into the surrounding trees, making it feel like part of the forest. *Fun fact:* The chapel was designed by Lloyd Wright, the son of famous architect Frank Lloyd Wright!

COLOR YOUR CITY

THE ARCHITECTURE COLORING BOOK

AIA Long Beach/South Bay is the local chapter of the American Institute of Architects, serving architects and design professionals across our region. We connect members through programs, events, and advocacy, while celebrating the power of design to shape vibrant, resilient, and inclusive communities. Through initiatives like Architecture Week, we also engage the public—sharing how architecture impacts our everyday lives.

Our Equity, Diversity, and Inclusion (EDI) Committee is dedicated to creating a more inclusive design community. Through programs, partnerships, and outreach, the committee works to ensure that all voices are reflected in the built environment. This coloring book is one of many efforts to inspire young people from all backgrounds to see themselves in architecture and design.



What Does an Architect Do?

Architects design buildings and spaces.

They think about people, nature, and communities.

They draw, imagine, and solve problems.

Design Your Own Building!

Who will use your building?

What will it look like?

Does it have windows? A garden?

Share Your Design!



www.aialb-sb.org